

This document is exclusive MARECO LUCE s.r.l., is strictly prohibited disclosure or reproduction, even partial, as well the use of without written consent of MARECO LUCE s.r.l..The company reserves the right to change models, dimensions and materials at any time without notice.

PRODUCT DATA SHEET

Delux wall 360°

Code : 0121184J

PRODUCT FAMILY

- Outdoor residential Led square shaped complete with fixing bracket for wall mounting (IP65)

MATERIAL CHARACTERISTICS

- Top cover made of die-cast aluminium (ADC12) anodized and painted
- Housing made of extruded aluminium EN AW 6060 with thermal treatment, subjected to cleaning and degreasing treatment before anodizing and painting
- Diffuser in transparent PMMA (acrylic)
- Wall fixing bracket 81x14x20mm in hot-dip galvanized steel 75m UNI EN 1461
- Polyester powder coating with a pretreatment (Phosphochromating method) to ensure high protection against weathering
- Silicone gaskets
- Screws in stainless steel A2

COLOR

- Metallic grey RAL 9006
- Anthracite RAL 7016 textured
- Rust

LIGHTING CHARACTERISTICS

- LED lighting source mains supplied, in a fixed position
- Immediately ON at 100% of light flux
- Monochromatic LED module (24 Led's)
- PCB in IMS thickness 1,6mm

WIRING CHARACTERISTICS

- LED's module 10W mains powered 220-240V 50/60Hz
- PG9 metallic cable gland equipped with osmotic valve for air and humidity leakage (reducing the overpressures)
- Connection to the main supply through a H05RN-F 3x0,75mmq pre-wired cable (90cm) out of the luminaire

INSTALLATION AND ORDINARY MAINTENANCE CHARACTERISTICS

- Luminaire for direct wall mounting to be installed through expansion caps (not supplied)
- Ordinary and extraordinary maintenance not necessary

DIMENSIONS

- 85x85x120mm

TECHNICAL SPECS

- Led's consumption: 10W
- Luminaire consumption: 10W
- Power factor: 0,99
- Step MacAdam: 3
- Lifetime Led's: L70/B50>54Kh - Tc 105°C
- Warranty: 3 years

TECHNICAL SPECS 3000K/4000K

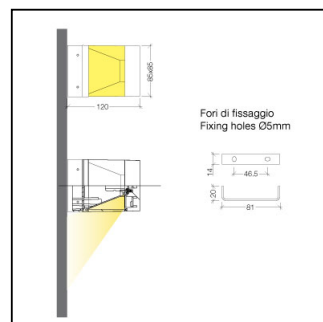
- Led's output: 1158lm@tc25°C
- Luminaire output: 663lm@ta25°C
- Led's efficiency: 116lm/W
- Luminaire efficiency: 66lm/W

Rev. 4 - 01/03/2022

Details

- Conformity with EU Directives
- CLASS I

- IK04
- RG1
- CRI>80
- IP 65



220-240V 50/60Hz 10W					
CE		IK04	RQ	CRI ≥ 80	IP65

