

This document is exclusive MARECO LUCE s.r.l., is strictly prohibited disclosure or reproduction, even partial, as well the use of without written consent of MARECO LUCE s.r.l. The company reserves the right to change models, dimensions and materials at any time without notice.

PRODUCT DATA SHEET

Delux 360°

Code : 1021182M

PRODUCT FAMILY

- Outdoor residential Led square shaped complete with base for plinth/floor installation (IP65)

MATERIAL CHARACTERISTICS

- Top cover made of die-cast aluminium (ADC12) anodized and painted
- Housing made of extruded aluminium EN AW 6060 with thermal treatment, subjected to cleaning and degreasing treatment before anodizing and painting
- Diffuser in transparent PMMA (acrylic)
- Reinforced thermoplastic base in NY-FV30%
- Polyester powder coating with a pretreatment (Phosphochromating method) to ensure high protection against weathering
- Silicone gaskets
- Screws in stainless steel A2

COLOR

- Metallic grey RAL 9006
- Anthracite RAL 7016 textured
- Rust

LIGHTING CHARACTERISTICS

- LED lighting source mains supplied, in a fixed position
- Immediately ON at 100% of light flux
- Monochromatic LED module (24 Led's)
- LED's Seoul MJT 3030 SAW8C72A
- PCB in IMS thickness 1,6mm

WIRING CHARACTERISTICS

- LED's module 10W mains powered 220-240V 50/60Hz
- PG9 metallic cable gland equipped with osmotic valve for air and humidity leakage (reducing the overpressures)
- Connection to the main supply through a H05RN-F 2x0.75mmq pre-wired cable out of the luminaire

INSTALLATION AND ORDINARY MAINTENANCE CHARACTERISTICS

- Luminaire for direct installation on plinth/floor through some screws and expansion caps (not supplied)
- Preset for installation on a Ø60mm pole (Hmin 80mm - Hmax 150mm)
- Ordinary and extraordinary maintenance not necessary

DIMENSIONS

- 85x85x845mm
- Base 85x85

OPTIONAL ACCESSORIES TO BE ORDERED SEPARATELY:

- IP68 connector - COD.CS093000
- "T"-3 ways IP68 connector - COD.CS093001

TECHNICAL SPECS

- Led's consumption: 10W
- Luminaire consumption: 10W
- Power factor: 0.99
- Type of Led's: Seoul MJT 3030 SAW8C72A
- Step MacAdam: 3
- Lifetime Led's: L70/B50>54Kh - Tc 105°C
- Warranty: 3 years

TECHNICAL SPECS 4000K

- Led's output: 930lm@tc25°C

- Luminaire output: 786lm@ta25°C
- Led's efficiency: 93lm/W
- Luminaire efficiency: 79lm/W

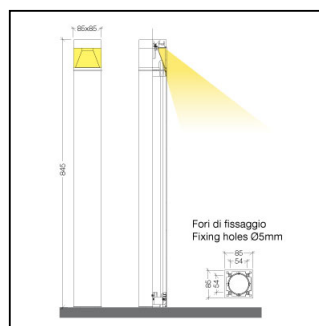
TECHNICAL SPECS 3000K

- Led's output: 930lm@tc25°C
- Luminaire output: 786lm@ta25°C
- Led's efficiency: 93lm/W
- Luminaire efficiency: 79lm/W

Rev. 2 - 20/05/20

Details

- Conformity with CEE directives
- CLASS I
- IK04
- RG1
- CRI>80
- CLASS A+
- IP 65



220-240V 50/60Hz 10W						
CE	⊕	IK	RG	CRI ≥80	A+	IP65

