

This document is exclusive MARECO LUCE s.r.l., is strictly prohibited disclosure or reproduction, even partial, as well the use of without written consent of MARECO LUCE s.r.l..The company reserves the right to change models, dimensions and materials at any time without notice.

## PRODUCT DATA SHEET

### Arco applique

Code : 0104184M

#### PRODUCT FAMILY

- Outdoor residential LED luminaire for wall mounting (IP65)

#### MATERIAL CHARACTERISTICS

- Housing and wall bracket made of die-cast aluminium (ADC12) anodized and painted
- Polyester powder coating with a pretreatment (Phosphochromating method) to ensure high protection against weathering
- Diffuser in white PMMA (acrylic), sealed with pure neutral silicone, anti-mold with low elastic modulus for an excellent resistance to aging, weathering, and UV rays
- Silicone gaskets
- Screws in stainless steel A2

#### COLOR

- Metallic grey RAL 9006
- Anthracite RAL 7016 textured

#### WEIGHT

- luminaire: 1.375Kg
- single package: 1.375Kg (165x60x185mm)
- multiple package with 12pcs: 16.6Kg (220x345x390mm)

#### LIGHTING CHARACTERISTICS

- LED Lighting source adjustable of 320°
- Immediately ON at 100% of light flux
- Monochromatic LED module made of n°18 LED's Everlight 2835

#### WIRING CHARACTERISTICS

- LED's module 6,3W
- Built-in driver (350mA driver output)
- Use only a flexible supply cable in double sheath type HAR, with external diameter between Ø5 and Ø10mm, and section of the internal conductors between 0.75 and 1.5mmq

#### INSTALLATION AND ORDINARY MAINTENANCE CHARACTERISTICS

- Luminaire for direct wall mounting to be installed through expansion caps (included)
- Power supply cables entry through a cord-block placed on the rear side
- A silicone gasket in contact with the mounting surface, which must therefore not present imperfections or grooves, seals the wiring compartment
- Ordinary maintenance not necessary

#### DIMENSIONS

- 160x168x54mm

#### TECHNICAL SPECS

- LED efficiency: 140lm/W
- LED's type: Everlight 2835
- Step MacAdam: 3
- Lifetime Led: 30Kh
- Lifetime driver: 30Kh
- CRI: >80
- RG: 1
- Nominal voltage: 100-240V
- Rated frequency: 50/60Hz
- Insulation class: I
- Power factor: >0.4
- Warranty: 3 years
- IK: 08

#### TECHNICAL SPECS 4000K

- LED's output 880lm@tc25°C

- Luminaire output 433lm@ta25°C
- LED's consumption 6.3W
- Luminaire consumption 8.5W

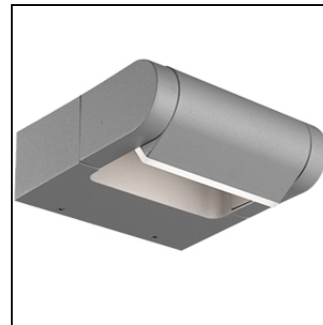
#### TECHNICAL SPECS 3000K

- LED's output 880lm@tc25°C
- Luminaire output 433lm@ta25°C
- LED's consumption 6.3W
- Luminaire consumption 8.5W

Rev. 1 - 10/9/19

#### Details

- Conformity with CEE directives
- IP 65



220-240V 50/60Hz 8,5W	
CEE	IP65