

This document is exclusive MARECO LUCE s.r.l., is strictly prohibited disclosure or reproduction, even partial, as well the use of without written consent of MARECO LUCE s.r.l..The company reserves the right to change models, dimensions and materials at any time without notice.

## PRODUCT DATA SHEET

### Coled Round

**Code : 1061284G**

#### PRODUCT FAMILY

- Outdoor LED luminaire for residential use, complete with base for plinth/floor installation (IP65)

#### MATERIALS CHARACTERISTICS

- Top cover in die-cast aluminium (ADC12) anodized and painted
- Housing made of extruded aluminium EN AW 6060 with thermal treatment, subjected to cleaning and degreasing treatment before anodizing and painting
- Coating with a pretreatment (Phosphochromating method) to ensure high protection against weathering
- Diffuser in traslucent PMMA (acrylic) with brushed effect, sealed with pure neutral silicone, anti-mold with low elastic modulus for an excellent resistance to aging, weathering, and UV rays
- Reinforced thermoplastic bottom part in NY-FV30%
- Reinforced thermoplastic base in NY-FV30%
- Silicone gaskets
- Fixing springs in cold galvanized harmonic steel AISI 301
- A2 stainless steel screws

Mechanical properties of silicone, polymerized 7 days at 22°C and 50% relative humidity

- Hardness, Shore A 37
- Tensile strength MPa 2,5
- Elongation at break %680

#### COLOUR

- Metallic grey RAL 9006
- Anthracite RAL 7016 textured

#### WEIGHT H700

- Luminaire: 1,260kg
- Single package: 1,720 kg (190x190x730mm)

#### WEIGHT H1000

- Luminaire: 1,430kg
- Single package: 2,060Kg (190x190x1030mm)

#### LIGHTING CHARACTERISTICS

- Mains powered LED's lighting source in fixed position
- Immediately ON at 100% of light flux
- Monochromatic LED's module (76 LED's)
- PCB in FR4 thickness 1,6mm
- Round symmetrical light throw

#### WIRING CHARACTERISTICS

- 15W LED's module supply tension 220-240V 50/60Hz
- PG9 plastic cable gland equipped with osmotic valve for air and humidity leakage (reducing the overpressures)
- Connection to the main supply through a H05RN-F 3x0.75mmq pre-wired cable (120cm) out of the luminaire

#### INSTALLATION AND MAINTENANCE CHARACTERISTICS

- Luminaire installed directly to plinth/floor with n.3 screws (not supplied)
- Ordinary and extraordinary maintenance not necessary

#### DIMENSIONS

- Ø175x700mm
- Ø175x1000mm
- Round shaped base Ø120

#### TECHNICAL SPECS 3000K/4000K

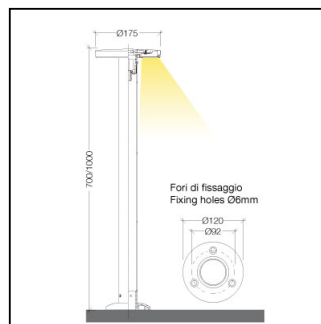
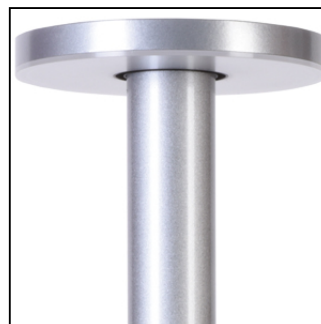
- Led's output: 1737lm@tc25°C

- Luminaire output: 1518lm@ta25°C
- Led's efficiency: 118,8lm/W
- Luminaire efficiency: 101,2lm/W
- Led's consumption: 15W
- Luminaire consumption: 15W
- Step MacAdam: 3
- Lifetime Led's: L70/B50>60Kh Tc 105°C
- Warranty: 3 years

Rev. 04 - 16/02/2023

#### Details

- Conformity with EU Directives
- CLASS I
- IK05
- RG0
- CRI>80
- IP 65



220-240V 50/60Hz 15W					
CE	⊕	IK05	RG	CRI ≥ 80	IP65

