

## Assembly and maintenance instructions

### TAURUS

Luminaire for suspension mounting, or wall/ ceiling mounting by using a bracket.


Possible options: Bluetooth sensor and DALI dimming.

TECHNICAL DETAILS: refer to the product label.

**CE** The EU declaration of conformity is available and it can be downloaded from the website [www.marecoluce.it](http://www.marecoluce.it).

**IP65** Protection degree against dust ingress, solid particles, moisture.

**D** The product holds a light source of energy efficiency class "D".

 This product shall not be treated as normal urban waste.

### WARNINGS:

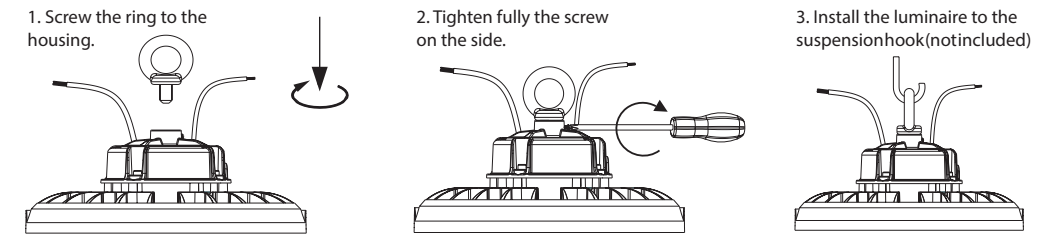
- THE SAFETY OF THIS PRODUCT IS GUARANTEED ONLY WITH THE RESPECT OF THE EXISTING RULES FOR THE ELECTRICAL SYSTEMS, AND WITH THE APPROPRIATE USE OF THESE INSTALLATION INSTRUCTIONS, THEREFORE IT IS NECESSARY TO KEEP THEM.
- THE IMPROPER USE OF THIS PRODUCT IS FORBIDDEN, ANY TAMPERING WITH THE PRODUCT OR MODIFICATION OF THE PRODUCT THAT IS NOT AUTHORIZED BY MARECO LUCE CAN CAUSE DAMAGE TO PEOPLE, ANIMALS OR THINGS, AND WILL VOID ANY WARRANTY OR LIABILITY.
- SWITCH OFF THE ELECTRICITY BEFORE CONDUCTING ANY KIND OF MAINTENANCE.
- THE PRODUCT MUST BE INSTALLED IN ACCORDANCE WITH THE BEST PRACTICE.
- THE LIGHT SOURCE OF THIS PRODUCT MUST BE REPLACED BY THE MANUFACTURER ONLY.
- IN CASE OF DAMAGED COMPONENTS, THEY MUST BE REPLACED WITH NEW MARECO LUCE SPARE PARTS BEFORE PUTTING THE PRODUCT INTO OPERATION AGAIN.
- THE CABLES COMING OUT FROM THE LUMINAIRE MUST NOT BE REPLACED OR REMOVED.
- THE AMBIENT WORKING TEMPERATURE MUST NOT EXCEED 40 °C.
- DO NOT INSTALL THE LUMINAIRE IN ENVIRONMENTS WITH CORROSIVE AGENTS, CHEMICAL SOLVENTS, DETERGENTS OR CUTTING FLUIDS.
- IF YOU DON'T DIM THE LUMINAIRE, INSULATE EACH CONDUCTOR OF THE DIMMING CABLE.
- IN THE CASE OF SUSPENSION MOUNTING: MAKE SURE THAT THE SUSPENSION DEVICES ARE SUITABLE FOR THE WEIGHT OF THE LUMINAIRE.
- IN THE CASE OF MOUNTING WITH THE USE OF WALL/CEILING BRACKET: SECURE THE BRACKET TO THE MOUNTING SURFACE WITH SOME SCREWS AND EXPANSIONS CAPS (NOT INCLUDED); CHOOSE THE EXPANSION CAPS SUITABLE FOR THE SPECIFIC MOUNTING SURFACE OF YOUR INSTALLATION.
- FOR EACH TYPE OF INSTALLATION, IT IS RECOMMENDED TO SECURE THE LUMINAIRE WITH A STEEL SAFETY CABLE (NOT INCLUDED).

### GENERAL MAINTENANCE RECOMMENDATIONS:

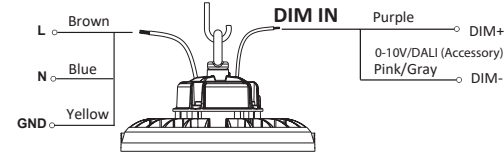
- CLEAN THE LUMINAIRE PERIODICALLY, IN ORDER TO REMOVE POSSIBLE DIRT DEPOSITS.
- CHECK THE INTEGRITY OF THE DIFFUSER: IN CASE OF DAMAGE REPLACE IT BY USING ONLY ORIGINAL SPARE PARTS SUPPLIED BY MARECO LUCE.
- DO NOT USE HARSH DETERGENTS, ABRASIVE CLOTHES, HIGH-PRESSURE WASHERS, WATER AT A TEMPERATURE HIGHER THAN 60°C TO CLEAN THE LUMINAIRE.
- CHECK PERIODICALLY THAT THE SCREWS OF THE LUMINAIRE ARE DULY TIGHTENED.

### INSTRUCTIONS FOR THE MULTIPOWER SETTING

1. Remove the plastic cover on the driver side.
2. Select the desired power according to the table on the side of the selector (pay attention: the luminaire must be off).
3. Insert the plastic cover.

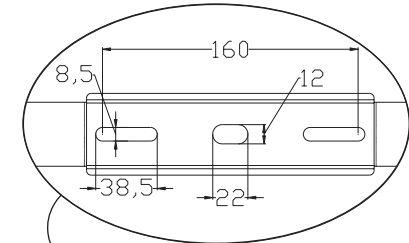
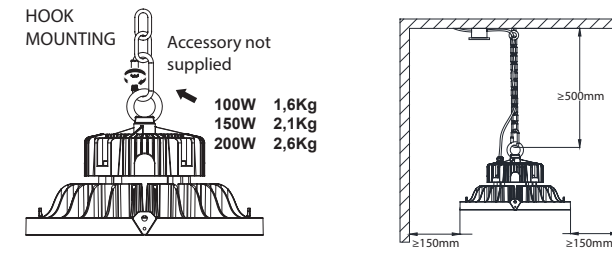


4. Connect the luminaire to the mains paying attention to respect the polarities, the luminaire insulation class, and making sure the connection is watertight in case the installation seat requires it.



INSTALLATION INSTRUCTIONS FOR THE BLUETOOTH SENSOR (accessory to be ordered separately).

1. See the relevant instructions supplied along with the Bluetooth sensor.



WALL/CEILING MOUNTING (Accessory to be ordered separately) WITH BRACKET

