


Use and maintenance instructions

Lira 42

Ground recessed luminaire.

TECHNICAL DETAILS: refer to the product label.

 The EU declaration of conformity is available and it can be downloaded from the website www.marecoluce.it.


IP67 Protection degree against dust ingress, solid particles, moisture



Drive over, maximum load 2000 Kg, 20 Km/h.



Insulation class II.

 The product holds a light source of energy efficiency class "G".



The product must not be disposed as a normal household waste.

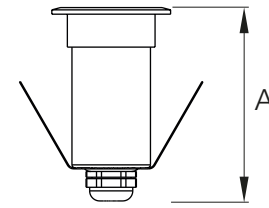
WARNINGS:

- THE SAFETY OF THIS PRODUCT IS GUARANTEED ONLY WITH THE RESPECT OF THE EXISTING RULES FOR THE ELECTRICAL SYSTEMS, AND WITH THE APPROPRIATE USE OF THESE INSTALLATION INSTRUCTIONS, THEREFORE IT IS NECESSARY TO KEEP THEM.
- THE IMPROPER USE OF THIS PRODUCT IS FORBIDDEN, ANY TAMPERING WITH THE PRODUCT OR MODIFICATION OF THE PRODUCT THAT IS NOT AUTHORIZED BY MARECO LUCE CAN CAUSE DAMAGE TO PEOPLE, ANIMALS OR THINGS, AND WILL VOID ANY WARRANTY OR LIABILITY.
- SWITCH OFF THE ELECTRICITY BEFORE CONDUCTING ANY KIND OF OPERATION.
- THE PRODUCT MUST BE INSTALLED IN ACCORDANCE WITH THE BEST PRACTICE.
- THE RECESSED BOX IS AN INTEGRAL PART OF THE LUMINAIRE, AND THEREFORE THE LUMINAIRE CANNOT BE INSTALLED WITHOUT IT.
- DO NOT INSTALL THE LUMINAIRE IN DEPRESSIONS OR WATER STAGNANT AREAS.
- DRAINAGE OF THE RECESSED BOX IS MANDATORY; IN ALL CONCRETE APPLICATIONS A DRAINAGE PIPE MUST BE USED.
- NO PART OF THE LUMINAIRE THAT IS NOT PROTECTED BY THE RECESSED BOX MUST BE IN DIRECT CONTACT WITH SOIL, OR COME INTO CONTACT WITH AGGRESSIVE CHEMICAL SUBSTANCES, DE-ICING AGENTS, SAULTY ENVIRONMENTS.
- DO NOT COVER THE VISIBLE PARTS OF THE LUMINAIRE.
- IN CASE OF DAMAGED COMPONENTS, THEY MUST BE REPLACED WITH NEW MARECO LUCE SPARE PARTS BEFORE PUTTING THE PRODUCT INTO OPERATION AGAIN.
- THE LIGHTING SOURCE OF THIS LUMINAIRE CAN BE REPLACED BY THE MANUFACTURER ONLY.

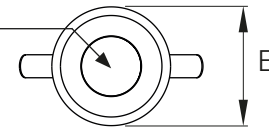
GENERAL MAINTENANCE RECOMMENDATIONS:

- CLEAN THE LUMINAIRE PERIODICALLY, IN ORDER TO REMOVE POSSIBLE DIRT DEPOSITS.
- CHECK THE INTEGRITY OF THE COMPONENTS: IN CASE OF DAMAGE COMPONENTS REPLACE THEM BY USING ONLY ORIGINAL SPARE PARTS SUPPLIED BY MARECO LUCE
- DO NOT USE HARSH DETERGENTS, HIGH-PRESSURE WASHERS TO CLEAN THE DIFFUSER AND THE FRAME.

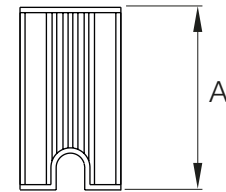
A67
BØ42



Ta 25°C
T 50°C

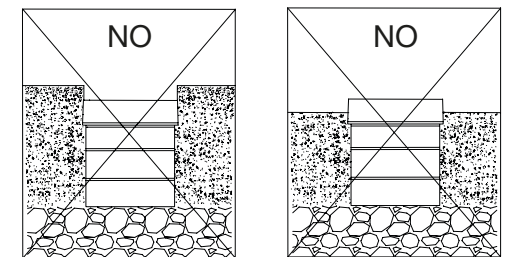
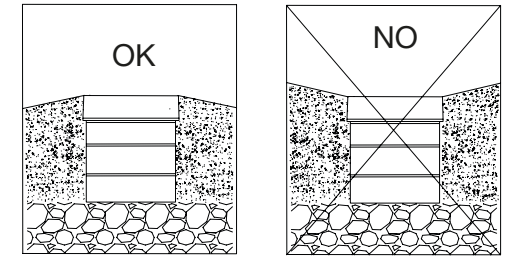


A69
BØ38.5



INSTRUCTIONS FOR CEMENTING THE RECESSED BOX:

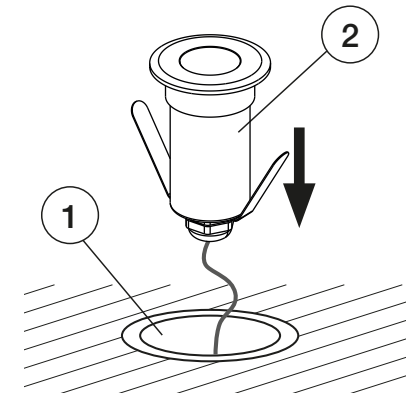
1. Lay at least 20 cm of draining material on the bottom of the installation hole to allow water outflow.
2. Fill the installation hole with water and make sure that it flows out within 30 min. If this does not happen a further drainage is necessary (i.e., a drainage pipe).
3. Position the recessed box and cement it flush to the mounting surface.
4. Clean the inside part of the recessed box and install the luminaire



INSTALLATION INSTRUCTIONS:

1. Cement the recessed box (1) first, then make the connection to the mains paying attention to respect the polarities. The connection must be watertight.
2. Insert the luminaire (2) into the recessed box (1).

ATTENTION: Luminaire complete with blocking system.
DO NOT USE ANY GLUES.



PLEASE NOTE:
The optional accessories **CANNOT** be placed inside the luminaire.

